

Control and load switches

(Cat. No. 194L)



IEC/EN 60947-3
UL 60947-4-1
CAN/CSA-C22.2 No. 60947-4-1



Attention: To prevent electrical shock, disconnect from power source before installing or servicing. To be commissioned and maintained only by qualified personnel; pay attention to the operating instructions!

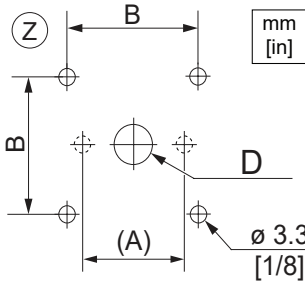


Achtung: Vor Installations- oder Servicearbeiten Stromversorgung unterbrechen, um Unfälle zu vermeiden. Inbetriebsetzung und Wartung nur durch Fachpersonal; Betriebsanleitung beachten!

Attention: Avant le montage et la mise en service, couper l'alimentation secteur afin d'éviter tout accident. Mise en service et entretien: seulement par du personnel spécialisé; respecter les instructions d'exploitation!

Attenzione: Per prevenire infortuni, togliere tensione prima dell'installazione o manutenzione. Messa in servizio e manutenzione solo da personale specializzato; attenersi alle istruzioni per l'esercizio!

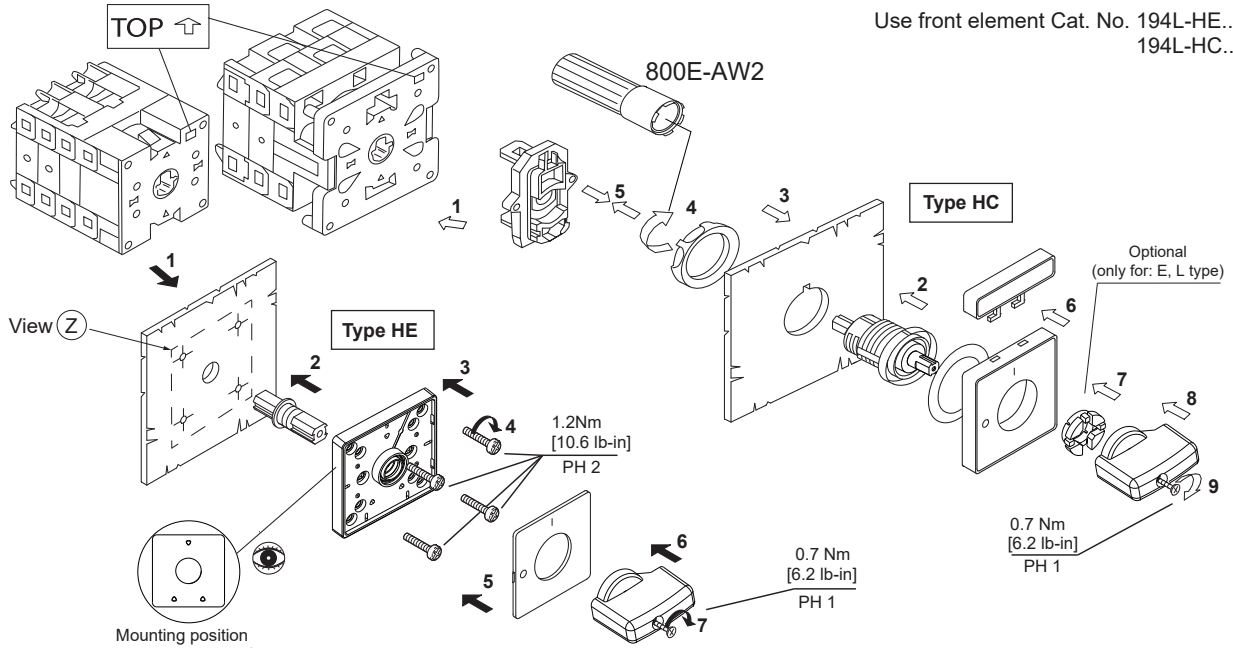
Atención: Desconectar la alimentación eléctrica antes de realizar el montaje y la puesta en servicio, con el objeto de evitar accidentes. Puesta en servicio y mantenimiento exclusivamente por personal especializado; respetar las instrucciones de puesta en servicio y mantenimiento!



194L-A			
Load Size [A]	A (only for 2-holes mounting)	B (only for 4-holes mounting)	D
12		36	17 [43/64]
16		[1-27/64]	
20		36 or 48	
25		[1-27/64] or [1-57/64]	
32		36 or 48	
40		[1-27/64] or [1-57/64]	

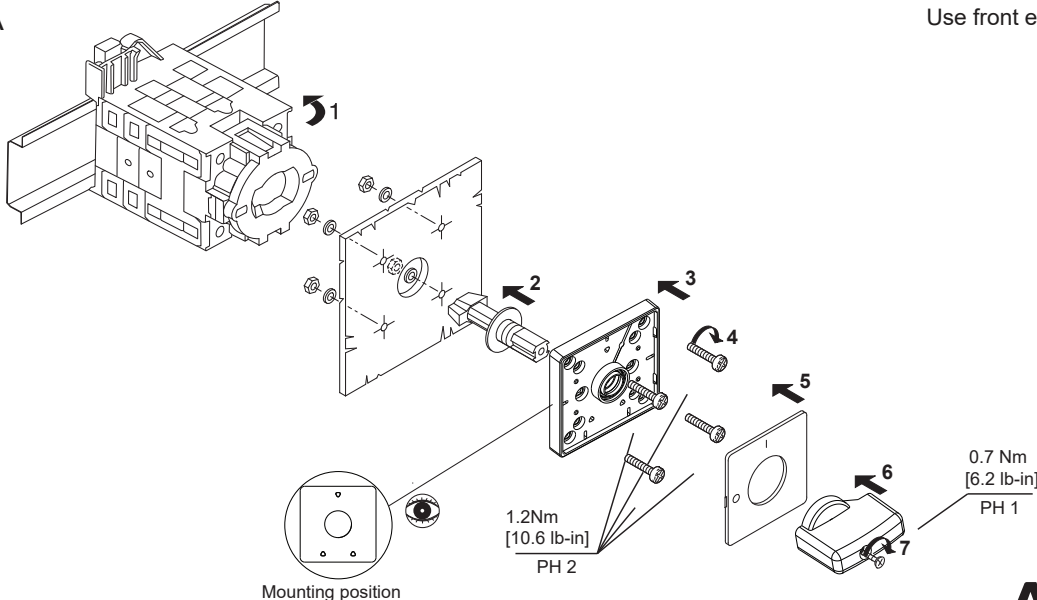
194L-E			
Load Size [A]	A (only for 2-holes mounting)	B (only for 4-holes mounting)	D
12	28 or 32	36	9.5 [3/8]
16	[1-7/64] or [1-17/64]	[1-27/64]	
20	28 or 32	36 or 48	
25	[1-7/64] or [1-17/64]	[1-27/64] or [1-57/64]	
32	33	36 or 48	
40	[1-19/64]	[1-27/64] or [1-57/64]	

194L-E



Use front element Cat. No. 194L-HE...
194L-HC...

194L-A

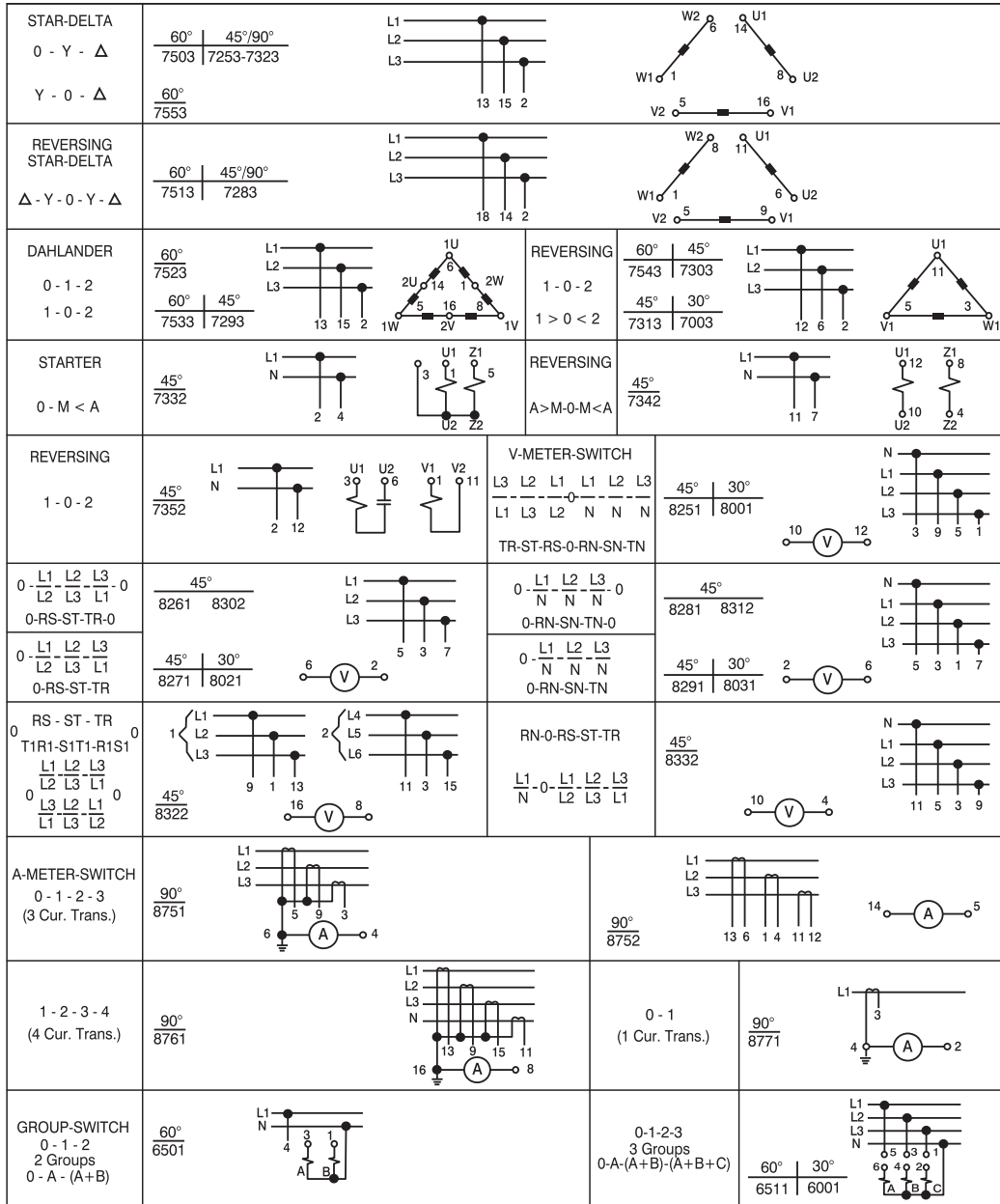


Use front element Cat. No. 194L-HE...

TYPE	IEC/EN 60947-3				GENERAL USE	USA - CND					MAX FUSE*	TORQUE/ SLOT			
	AC1/AC21A	AC3/AC23A				SUITABLE AS MOTOR DISCONNECT									
194L-12	690V	UI 690V	V~	230	400	690	12A	V~	120	240	480	600	20A	These devices are suitable for use on a circuit capable of delivering not more than 5,000 rms symmetrical amperes, 600V max, when protected by a * K5 class fuse. USE CU WIRE 60/75°C ONLY	9lb-in 1Nm / PZ 1
	12A		kW	2.2	4	5.5		600 Vac	HP	1	2	5			
194L-16	690V		V~	230	400	690	16A	V~	120	240	480	600	25A		10.6lb-in 1.15Nm / PZ 2
	16A		kW	3	5.5	7.5		600 Vac	HP	1.5	3	7.5			
194L-20	690V	V~	230	400	690	20A	V~	120	240	480	600	25A	10.6lb-in 1.15Nm / PZ 2		
20A	kW	4.5	7.5	8	600 Vac		HP (FLA)	2(13,6)	4(12,4)	8(11,6)	10(11)			3ph/3p 1ph/2p	
194L-25	690V	V~	230	400	690	25A	V~	120	240	480	600	25A	10.6lb-in 1.15Nm / PZ 2		
	25A	kW	5.5	11	11		600 Vac	HP (FLA)	3(19,2)	6(18)	12(17)			15(17)	3ph/3p 1ph/2p

ANSCHLUSSPLAN
WIRING DIAGRAMS

SCHEMA DES CONNEXIONS
SCHEMI DI COLLEGAMENTO







For Technical Support, visit ROK.AUTO/SUPPORT.

Rockwell Automation maintains current product environmental compliance information on its website at rok.auto/pec.

Rockwell Otomasyon Ticaret A.Ş., Kar Plaza İş Merkezi E Blok Kat:6 34752 İçerenköy, İstanbul, Tel: +90 (216) 5689400

EEE Yönetmeliğine Uygundur

Connect with us.    

rockwellautomation.com

expanding human possibility™

AMERICAS: Rockwell Automation, 1201 South Second Street, Milwaukee, WI 53204-2496 USA, Tel: (1) 414.382.2000, Fax: (1) 414.382.4444

EUROPE/MIDDLE EAST/AFRICA: Rockwell Automation NV, Pegasus Park, De Kleetlaan 12a, 1831 Diegem, Belgium, Tel: (32) 2 663 0600, Fax: (32) 2 663 0640

ASIA PACIFIC: Rockwell Automation, Level 14, Core F, Cyberport 3, 100 Cyberport Road, Hong Kong, Tel: (852) 2887 4788, Fax: (852) 2508 1846

Allen-Bradley, Rockwell Automation, and Rockwell Software are trademarks of Rockwell Automation. Trademarks not belonging to Rockwell Automation are property of their respective companies.

Publication 194L-IN007G-EN-P - November 2020

Copyright ©2020 Rockwell Automation, Inc. All Rights Reserved. Printed in USA.



36-106-811-01

DIR 36_106_811 (Version 07)